



Property type : Villa

Location : Pilar De La Horadada

Bedrooms : 3

Bathrooms : 4

House area : 149 m²

Plot area : 452 m²

✓ Pre-Installed

NEW BUILD VILLAS IN PILAR DE LA HORADADA ON THE GOLF COURSE

3 New Build exclusive villas in Lo Romero Golf are the perfect opportunity to enjoy a home on the front line of the golf course.

This residential is characterized by its fantastic location and its spectacular views to the sea and the golf course.

The sophisticated and modern architecture used, as well as its careful selection of qualities, make our homes unique projects, aimed at demanding clients, who are looking for a good investment and quality of life.

New Build detached villas has 3 bedrooms, 4 bathrooms, open plan kitchen with the lounge area, fitted wardrobes, private garden with the pool and off road parking space.

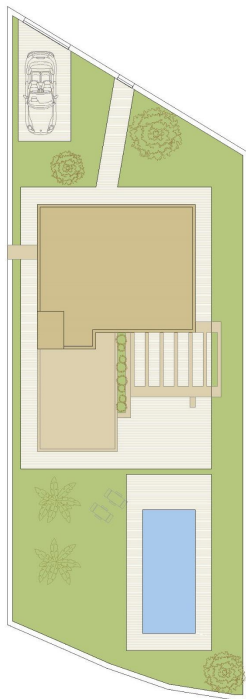
Lo Romero Golf Resort is located in a privileged area of the municipality of Pilar de la Horadada (Alicante), in the heart of the Costa Blanca.

The 18-hole golf course is close to beautiful beaches with crystal-clear waters and is perfectly connected by road to the cities of Alicante and Murcia, as well the airports of Corvera (Murcia) and Alicante are respectively 40 and 55 minutes away.

Pilar de la Horadada is a typical Spanish village in the most southern part of the Costa Blanca.

The large main street has supermarkets, lots of shops, restaurants and bars and some lovely squares.

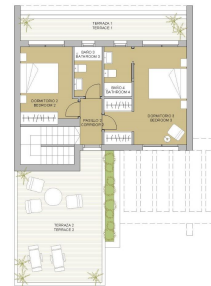
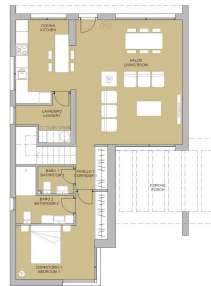
The beautiful beaches of Torre de la Horadada and Mil Palmeras with fine sand promenade is just 5 minutes away.



VIVIENDA TIPO V.3

SUPERFICIES (TIPO) / OCCUPABLE AREA

PLANTA BAJA / GROUND FLOOR	
SALÓN / LIVING ROOM	33,45 m ²
SOCIAL / BREAK ROOM	11,28 m ²
COCINA / KITCHEN	6,40 m ²
W.C. / TOILET	4,40 m ²
SUAVINORO / BEDROOM 1	14,00 m ²
BANJO / BATHROOM 1	4,40 m ²
BANJO / BATHROOM 2	3,50 m ²
PASO / CORRIDOR	3,50 m ²
PLANTA PRIMERA / FIRST FLOOR	
DORMITORIO 2 / BEDROOM 2	10,50 m ²
DORMITORIO 3 / BEDROOM 3	13,50 m ²
BANJO / BATHROOM 3	3,50 m ²
BANJO / BATHROOM 4	3,50 m ²
PASO / CORRIDOR	3,50 m ²
POZADERA / TERRACE	3,48 m ²
PORCHES / PORCHES	
PORCHES / PORCHES	11,40 m ²
TERRAZA / TERRACE 1	3,20 m ²
TERRAZA / TERRACE 2	24,00 m ²
SUPERFICIES CONST. / BUILT AREA	
REP. CERRADA / CLOSED AREA	104,20 m ²
COSEDA AREA + PORCHES + TERRACES	207,40 m ²
FAMILIA / PLOT	403,20 m²



VIVIENDA TIPO V.3

SUPERFICIES (TIPO) / OCCUPABLE AREA

BUNDA BAJA / GROUND FLOOR	
SALÓN / LIVING ROOM	33,45 m ²
SOCIAL / BREAK ROOM	11,28 m ²
COCINA / KITCHEN	6,40 m ²
W.C. / TOILET	4,40 m ²
SUAVINORO / BEDROOM 1	14,00 m ²
BANJO / BATHROOM 1	4,40 m ²
BANJO / BATHROOM 2	3,50 m ²
PASO / CORRIDOR	3,50 m ²
BUNDA PRIMERA / FIRST FLOOR	
DORMITORIO 2 / BEDROOM 2	10,50 m ²
DORMITORIO 3 / BEDROOM 3	13,50 m ²
BANJO / BATHROOM 3	3,50 m ²
BANJO / BATHROOM 4	3,50 m ²
PASO / CORRIDOR	3,50 m ²
POZADERA / TERRACE	3,48 m ²
PORCHES / PORCHES	
PORCHES / PORCHES	11,40 m ²
TERRAZA / TERRACE 1	3,20 m ²
TERRAZA / TERRACE 2	24,00 m ²
SUPERFICIES CONST. / BUILT AREA	
REP. CERRADA / CLOSED AREA	104,20 m ²
COSEDA AREA + PORCHES + TERRACES	207,40 m ²
FAMILIA / PLOT	403,20 m²

