



Property type : Villa

Pool : Private

House area : 346 m²

Location : Moraira_Teulada

Views : Sea views

Plot area : 13000 m²

Bedrooms : 4

Bathrooms : 4

✓ Pre-Installed

✓ Roof Terrace

Newly built villa in Teulada with mountain views

On the ground floor we find a large living-dining area and open plan kitchen, master bedroom with walking wardrobe and bathroom, front terrace with access to the pool.

On the first floor is 3 bedrooms with fitted wardrobes, 3 bathrooms en suite.

As well here you have basement of 81m2 with wine cellar.

Villa will be build using high quality materials.

The kitchen will be chosen by the client, kitchen cabinets, worktop and appliances.

Air conditioning with climate control system (condense) in the living rooms and bedrooms. Mitsubishi brand.

The swimming pool will be built with an outdoor shower (hot/cold water connection).

Automatic entrance gate for the cars with remote control and automatic pedestrian door.

Garden to be chosen by the client.

Moraira is a small town with with good restaurants, bars and plenty of supermarkets around.

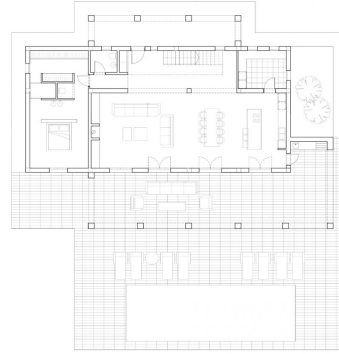
There is a very pleasant beach right next to town that is great for families.

The seafront offers tremendous views of Penon Ifach across the bay in Calpe. The coast road getting there is well worth doing with some spectacular views.

Moraira situated about 1 hour 15 minutes North up the A7 from Alicante airport its fairly easy to get to. It's about the same distance or a little less South from Valencia airport.

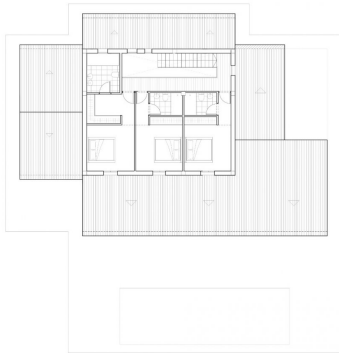


Superficie	Construida
Puerta Baja	148,33 m ²
Vivienda	22,84 m ²
Puerta 1	77,07 m ²
Puerta 2	77,07 m ²
Terrazo	147,03 m ²
Puerta	48,03 m ²
Alto	48,03 m ²
Puerta Alto	48,03 m ²
Vivienda	97,06 m ²
Puerta Sótano	97,06 m ²
Vivienda	97,06 m ²
Reserva	12,00 m ²



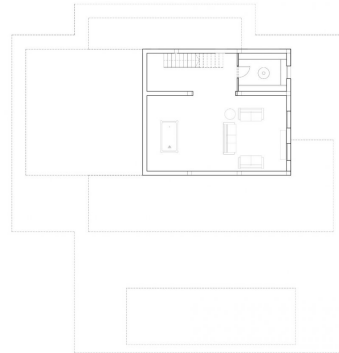
PLANTA BAJA

Superficie	Construida
Puerta Baja	148,33 m ²
Vivienda	22,84 m ²
Puerta 1	77,07 m ²
Puerta 2	77,07 m ²
Terrazo	147,03 m ²
Puerta	48,03 m ²
Alto	48,03 m ²
Puerta Alto	48,03 m ²
Vivienda	97,06 m ²
Puerta Sótano	97,06 m ²
Vivienda	97,06 m ²
Reserva	12,00 m ²

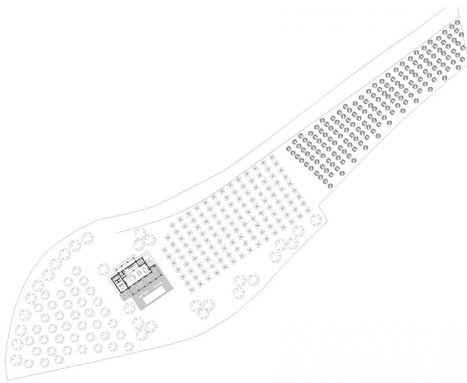


PLANTA ALTA

Superficie	Construida
Puerta Baja	148,33 m ²
Vivienda	22,84 m ²
Puerta 1	77,07 m ²
Puerta 2	77,07 m ²
Terrazo	147,03 m ²
Puerta	48,03 m ²
Alto	48,03 m ²
Puerta Alto	48,03 m ²
Vivienda	97,06 m ²
Puerta Sótano	97,06 m ²
Vivienda	97,06 m ²
Reserva	12,00 m ²



PLANTA SÓTANO



EMPLAZAMIENTO