

**Property type :** Villa  
**Location :** Fuente Álamo  
**Bedrooms :** 3  
**Bathrooms :** 3

**House area :** 143 m<sup>2</sup>  
**Plot area :** 300 m<sup>2</sup>

✓ Pre-Installed

✓ Roof Terrace

#### NEW BUILD TOWNHOUSES IN FUENTE ALAMO, MURCIA

New Build residential of villas and townhouses in in Fuente Álamo, Murcia.

This location offers an exceptional natural setting, away from the hustle and bustle of the big cities and the tourist pressure of the coast. Furthermore, we are committed to working from a sustainable development perspective, minimising our environmental impact and maximising integration with the local community. Here your dreams of a peaceful and sustainable lifestyle come true. Imagine waking up every morning in a stunning natural setting, surrounded by serene landscapes and the unique beauty of the Murcia countryside.

New build projects prioritise energy efficiency, the use of environmentally friendly materials and harmonious integration with the rural environment. From property design to development planning to reduce our carbon footprint and promote responsible practices in all operations.

Development giving priority to energy efficiency and community integration to create high quality housing in harmony with the natural environment.

Pre-installation of ducted air conditioning system, hot / cold, installation of machines in the options.

Video intercom system.

Security access door lacquered in colour, with lock and anti-vandalism security fittings.

Wardrobes with boot, lined on the inside, lacquered in white.

Kitchen furniture not included (optional):

- Furnished with wall and base units. Fully equipped. Possibility of any type of modification by the client.

- Stone worktop.

- Stainless steel sink, with Roca or similar mixer taps.

- Vitroceramic hob, extractor hood and electric oven, stainless steel. Balay or similar.

Photovoltaic solar panels system, with accumulator tank. Pre-installation of ducted air-conditioning system, hot/cold, installation of machines in options.

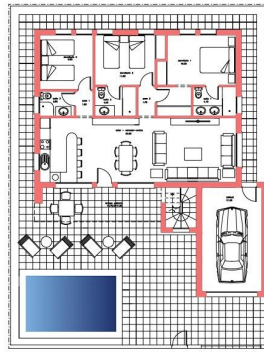
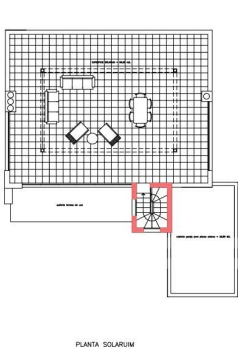
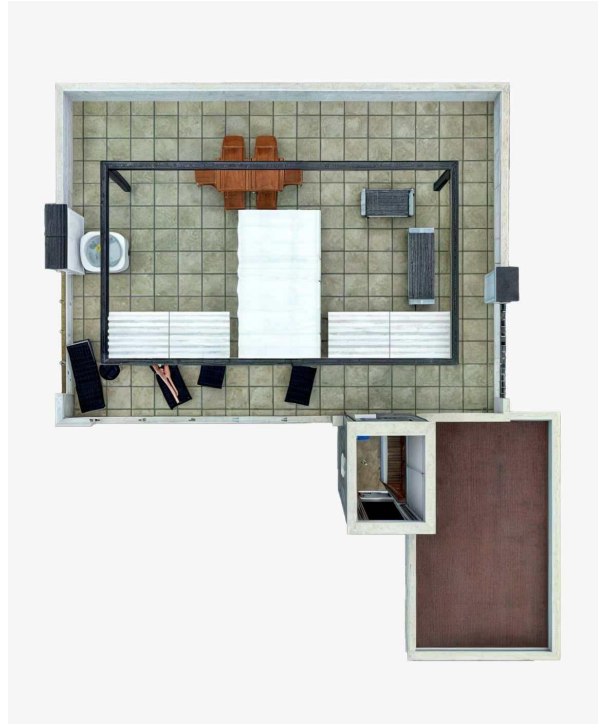
Optional private swimming pool at additional cost with submerged night lighting and purification with saline chlorination system.

Possibility of making modifications to the property, subject to prior valuation approved by both parties.

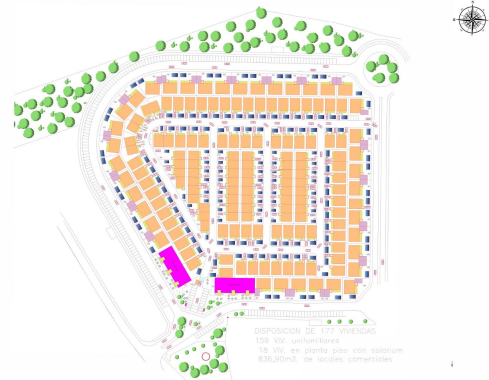
Fuente Álamo de Murcia is a town and municipality in the Region of Murcia, southern Spain. It is situated 22 km northwest of Cartagena and 35 km south west of Murcia.

The town lies in the basin of the Mar Menor surrounded by the mountains of Algarrobo, Los Gómez, Los Victorias and the Carrascoy. The water from these mountains flows down into the Rambla de Fuente Álamo and then onto the Mar Menor.

Fuente Álamo located 30 minutes from Murcia - Corvera airport.



SUP. UTIL: 122,25 M2.  
SUP. CONSTRUIDA: 143,50 M2.  
SUP. DE PARCELA NETA: 300,00 M2.



DISPOSICIÓN DE 127 VIVIENDAS  
159 MW urbanización  
138 MW en planta solar con solarium  
836,80m2 de locales comerciales

