



Property type : Villa

Pool : Private

House area : 111 m²

Location : Pilar De La Horadada

Plot area : 280 m²

Bedrooms : 3

Bathrooms : 3

✓ Pre-Installed

✓ Roof Terrace

New Construction Villas on the Frontline of Lo Romero Golf

Luxury Villas in Lo Romero Golf Resort

Discover 7 exclusive new construction villas situated on the frontline of Lo Romero Golf, offering a perfect blend of luxury, comfort, and breathtaking views of the golf course. These residences stand out for their prime location and modern architectural design, ideal for discerning buyers looking for a smart investment and an exceptional quality of life.

Modern Design with Premium Features

Each villa boasts a sophisticated, contemporary style with high-end finishes. The homes include 3 spacious bedrooms, 3 bathrooms, an open-plan kitchen connected to the living room, built-in wardrobes, and private gardens with a swimming pool. Additional features include:

Reinforced security entrance doors

Motorized blinds matching the carpentry, with thermal and acoustic insulation

Double-glazed Climalit windows with anti-breakage safety glass

Aerothermal water heating system for energy efficiency

Photovoltaic solar panels for electrical energy production

Pre-installation of ducted air conditioning

Carport with a pergola in elegant oxidized brown tones

Natural stone masonry walls separating the private gardens and the golf course

Prime Location in Pilar de la Horadada

Located in the charming Lo Romero Golf Resort, the villas enjoy a privileged setting in Pilar de la Horadada, a quintessential Spanish town in southern Costa Blanca. The 18-hole golf course is surrounded by beautiful landscapes and lies just a short drive from crystal-clear Mediterranean beaches.

Proximity to Key Points of Interest

Beaches: The pristine beaches of Torre de la Horadada and Mil Palmeras are just 6 km away, offering fine sand scenic promenades.

Shopping: Supermarkets, shops, and dining options in Pilar de la Horadada's vibrant main street are only a 5-minute drive. **Airports:** Murcia-Corvera Airport is 40 minutes away (approximately 45 km), and Alicante-Elche Airport is a 55-minute drive (about 75 km).

Golf: Enjoy immediate access to the Lo Romero Golf course, making this a golfer's paradise.

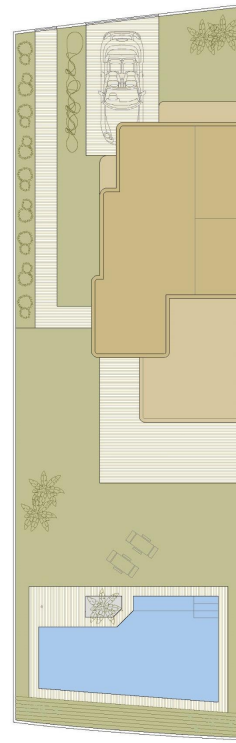
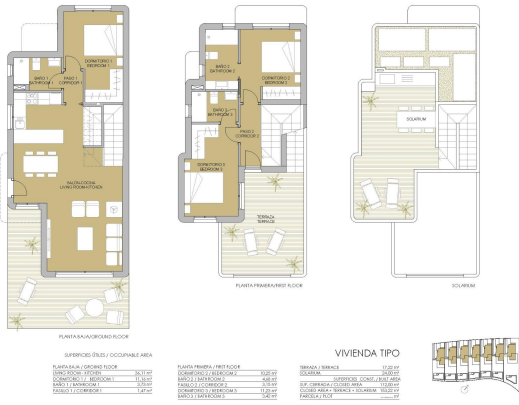
Nearby Cities: Excellent road connections link you to Alicante and Murcia for cultural excursions and city amenities.

Enjoy the Costa Blanca Lifestyle

Pilar de la Horadada combines traditional Spanish charm with modern amenities. Stroll through lively squares, savor Mediterranean cuisine at local restaurants, and experience the relaxed coastal lifestyle.

Make Your Dream Home a Reality

Don't miss this unique opportunity to own a frontline golf villa with unmatched quality and location. Contact us today to schedule a viewing and start enjoying the Costa Blanca lifestyle!



VIVIENDA TIPO V.1

SUPERFICIE ÚTIL / OCCUPABLE AREA	
PIANTA SUELO / GROUND FLOOR	
USOS SOCIALES / SERVICES	3611 m ²
SOBREPISO I / MEZZANINE I	1114 m ²
BALCÓN I / TERRACE I	379 m ²
PASEO I / COVERED	147 m ²
PIANTA PRIMERA / FIRST FLOOR	
COMUNICACIÓN / BATHROOM	1028 m ²
BALCÓN II / TERRACE II	448 m ²
PASEO II / COVERED	210 m ²
COMUNICACIÓN / BATHROOMS	1120 m ²
BALCÓN III / TERRACE III	240 m ²
TERRAZA / TERRACE	
	1722 m ²
SOLARIM	
	2468 m ²
SUPERFICIE CONSTR. / BUILT AREA	
SUP. CONSTR. / COVERED AREA	1120 m ²
SOLARIM / TERRACE + SOLARIM	1028 m ²
PARCELA / PLOT	
	9808 m ²



PLANO SUJETO A MODIFICACIONES DE NATURALEZA TÉCNICA O JURÍDICA. LAS SUPERFICIES SON APROXIMATIVAS. PLANO SUJETO A MODIFICACIONES POR MOTIVOS TÉCNICOS O LEGALES. LOS REQUISITOS SE MUESTRAN APROXIMATIVAMENTE.

PLANO SUJETO A MODIFICACIONES DE NATURALEZA TÉCNICA O JURÍDICA. LAS SUPERFICIES SON APROXIMATIVAS. PLANO SUJETO A MODIFICACIONES POR MOTIVOS TÉCNICOS O LEGALES. LOS REQUISITOS SE MUESTRAN APROXIMATIVAMENTE.

