



**!tipo\_vivienda :** Villa

**Pool :** Privat pool

**Bo yta :** 178 m<sup>2</sup>

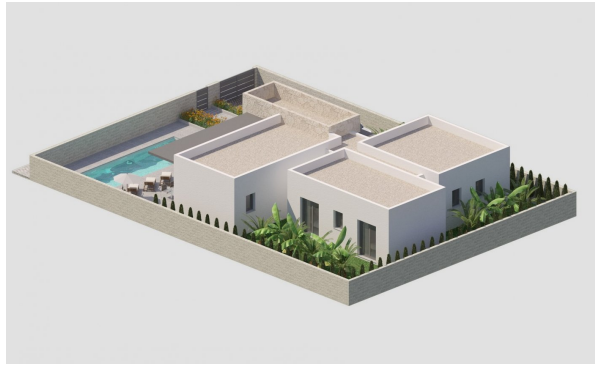
**Beläget :** Benijofar

**Tomtyta :** 535 m<sup>2</sup>

**Sovrum :** 3

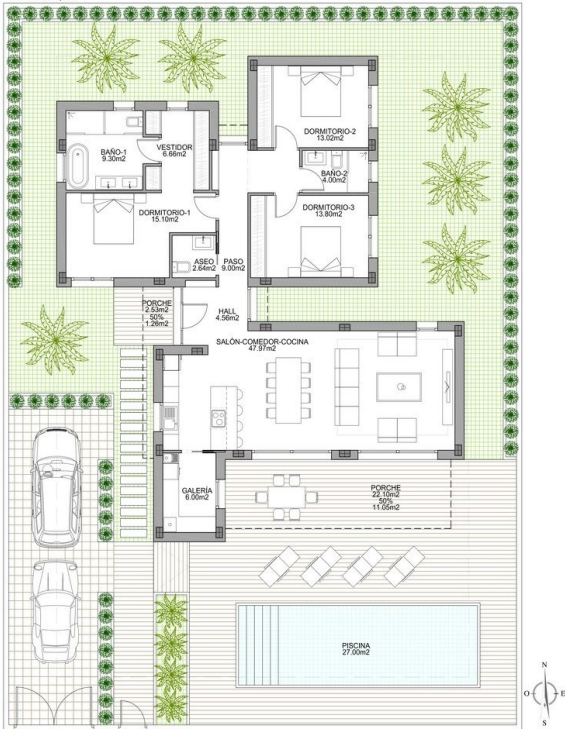
**Badrum :** 3

✓ Förinstallation



|                            |                      |                      |                      |
|----------------------------|----------------------|----------------------|----------------------|
| SUP. CONSTRUÏDA 100%       | 164,23m <sup>2</sup> | SUP. ÚTIL 100%       | 132,05m <sup>2</sup> |
| SUP. CONSTRUÏDA PORCHE 50% | 13,31m <sup>2</sup>  | SUP. ÚTIL PORCHE 50% | 13,31m <sup>2</sup>  |
| SUP. CONSTRUÏDA TOTAL      | 177,54m <sup>2</sup> | SUP. ÚTIL TOTAL      | 145,36m <sup>2</sup> |

ESCALA 1/75



CALLE FELIPE HERNÁNDEZ 35