

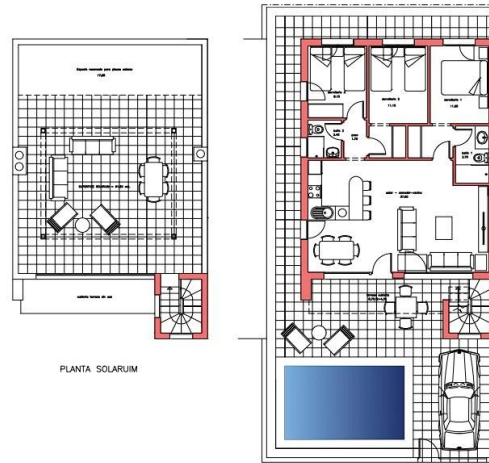
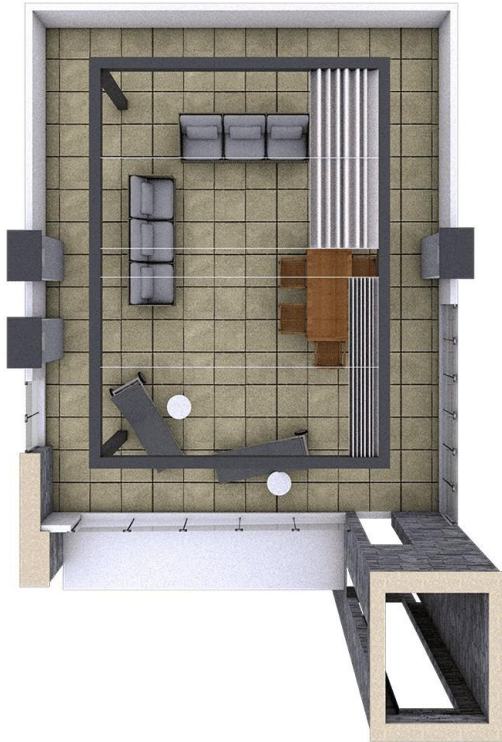


**!tipo\_vivienda :** Villa  
**Beläget :** Fuente Álamo  
**Sovrum :** 3  
**Badrum :** 2

**Bo yta :** 94 m<sup>2</sup>  
**Tomtyta :** 181 m<sup>2</sup>

✓ Förinstallation

✓ Takterrass



PLANTA BAJA SUP. UTIL : 79,85 M2.  
SUP. CONSTRUIDA: 94,00 M2.  
SUP. DE PARCELA NETA: 200,00 M2.

