



!tipo_vivienda : Radhus

Beläget : Fuente Álamo

Sovrum : 2

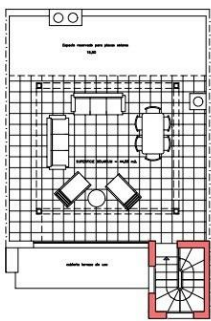
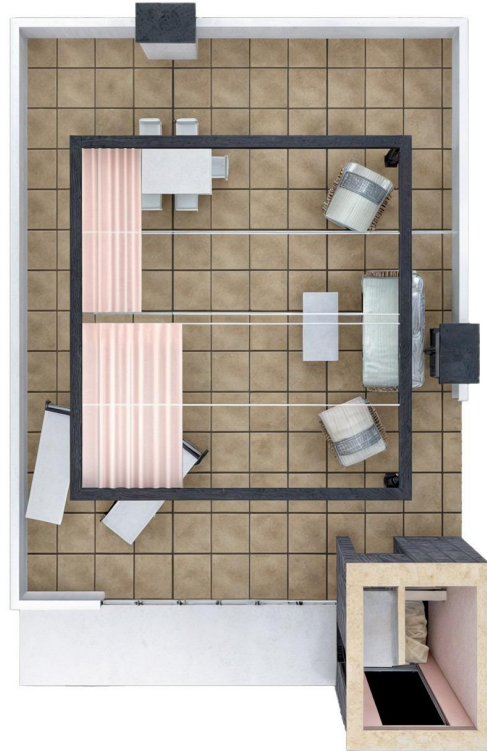
Badrum : 2

Bo yta : 70 m²

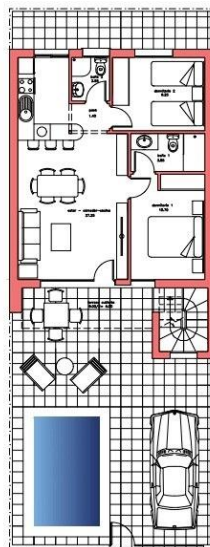
Tomtyta : 133 m²

✓ Förinstallation

✓ Takterrass



PLANTA SOLARIUM



PLANTA BAJA

SUP. UTIL : 59,00 M2.
SUP. CONSTRUIDA: 70,00 M2.
SUP. DE PARCELA NETA: 150,00 M2.



DISPOSICION DE 177 VIVIENDAS
158 VV. unifamiliares
15 VV. en planta plus con ascensor
836,20m2. de locales comerciales

